



2011-12 School Quality Snapshot

Bancroft Middle

San Leandro Unified

1150 Bancroft Ave., San Leandro, CA 94577

Grades Offered: 6 - 8

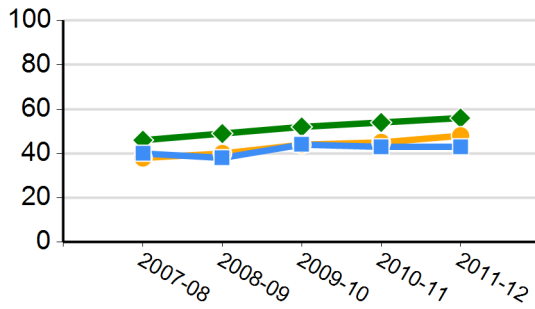
Enrollment: 974

Charter: No

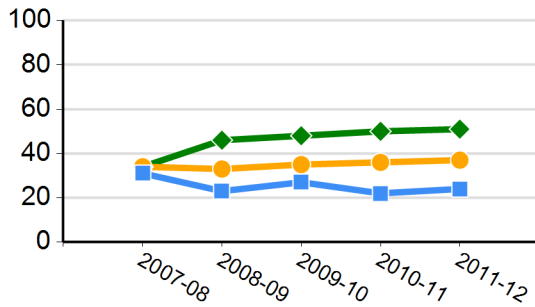
Title I Funded: Yes

CDS Code: 01-61291-6057111

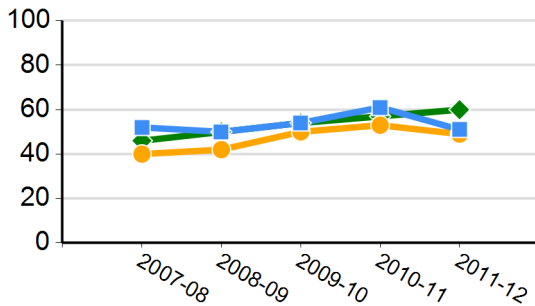
CST English-language Arts Results
(percent proficient and above)



CST Mathematics Results
(percent proficient and above)



CST Science Results
(percent proficient and above)



California's Academic Performance Index (API)

2012 Growth API	702
State Rank	3
Similar Schools Rank	1
2011-12 Growth from Prior Year	-12
Met Schoolwide Growth Target	No
All Student Groups Met Target	No

API Subgroup Performance - 2012 API Growth

	Met Target	Growth
African American or Black	No	-27
American Indian or Alaska Native		--
Asian		--
Filipino		--
Hispanic or Latino	No	-6
Native Hawaiian or Pacific Islander		--
White	Yes	16
Two or More Races		--
English Learners	No	-3
Socioeconomically Disadvantaged	No	-10
Students with Disabilities	No	2

- Green = Student group met target
- Red = Student group did not meet target
- Blue = Student group is not numerically significant
- = Not enough students to report

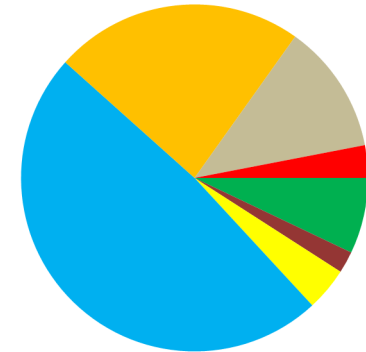
CHART LEGEND:

■ SCHOOL ● DISTRICT ◆ STATE

CST: CA Standards Test **CDS:** County-district-school

School and/or district information will not be displayed when data are not available or when data are representing fewer than 11 students.

2011-12 Enrollment by Race/Ethnicity

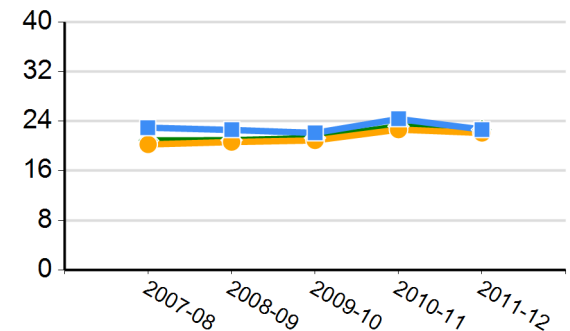


- American Indian or Alaska Native
- Asian
- Native Hawaiian or Pacific Islander
- Filipino
- Hispanic or Latino
- African American or Black
- White
- Two or More Races
- Not Reported

2011-12 Subgroup Enrollment

English Learners	35%
Socioeconomically Disadvantaged	72%
Students with Disabilities	12%

Average Class Size





2011-12 School Quality Snapshot

Bancroft Middle

San Leandro Unified

1150 Bancroft Ave., San Leandro, CA 94577

Grades Offered: 6 - 8

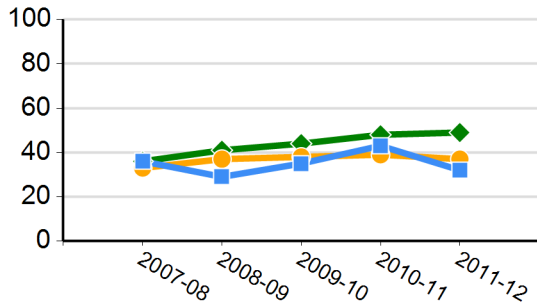
Enrollment: 974

Charter: No

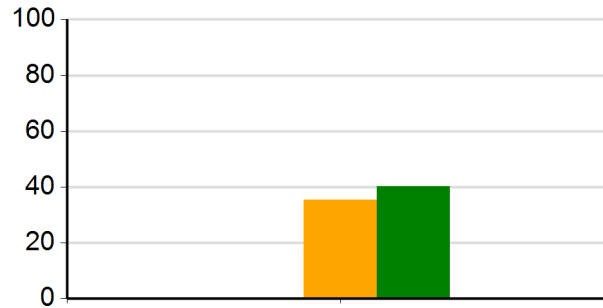
Title I Funded: Yes

CDS Code: 01-61291-6057111

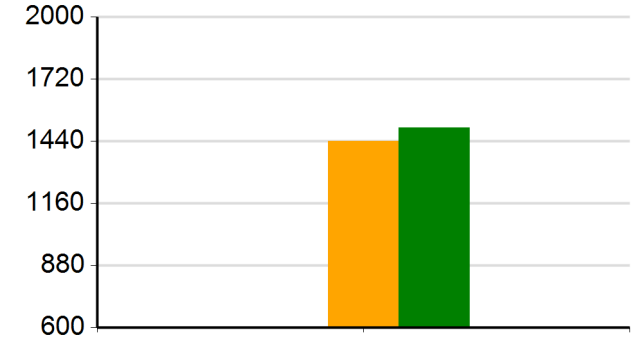
CST History/Social Science Results (percent proficient and above)



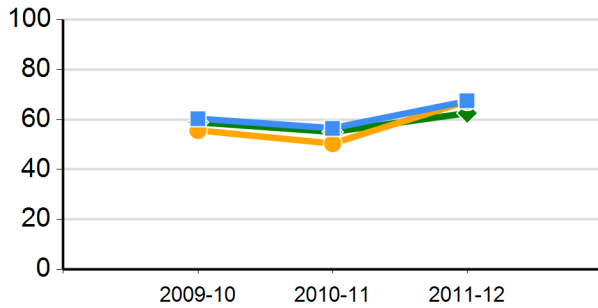
Percentage of 2010-11 Graduates Meeting University of California "a-g" Requirements



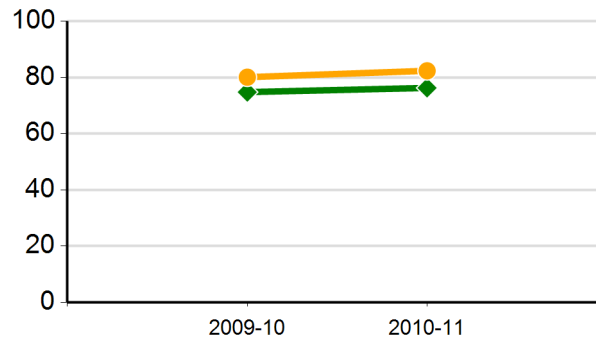
2010-11 Average SAT Score



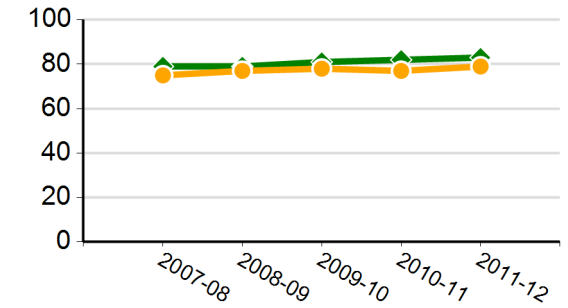
Percentage of English Learners Making Progress in Learning English



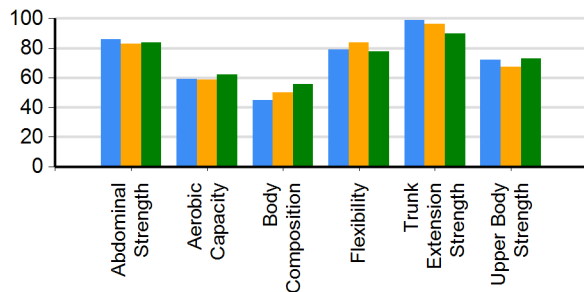
Cohort Graduation Rate*



CAHSEE English-Language Arts Grade 10 Passing Rate



Percentage of Students in the Healthy Fitness Zone in 2010-11



2010-11 Suspensions and Expulsions as a Percentage of Enrolled Students

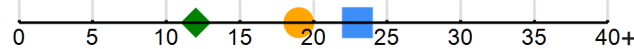


CHART LEGEND:

■ SCHOOL ● DISTRICT ◆ STATE

* Only two years of data are available

CAHSEE: CA High School Exit Examination

CST: CA Standards Test

School and/or district information will not be displayed when data are not available or when data are representing fewer than 11 students.

CAHSEE Mathematics Grade 10 Passing Rate

